

A Full-Fledged Medicinal Herb Garden

A full-fledged medicinal herb garden encompasses the major medicinal traditions: Chinese acupuncture, Indian Ayurvedic, Arabian/Mediterranean, classical European, Latin American, Native North American, African American, Native Californian, and also African, Southeast Asian, Japanese, Mexican, Australian, Persian, and Pacific Island.

It covers the full spectrum of herbs used in all the known healing modalities: physical and physiological, psychological and spiritual; and in the forms of plant parts, poultices, teas, tinctures, decoctions, ointments, essential oils, flower essences, fumigants, and homeopathic micro-doses.



Proposed garden design. See website for greater detail.

Requirements

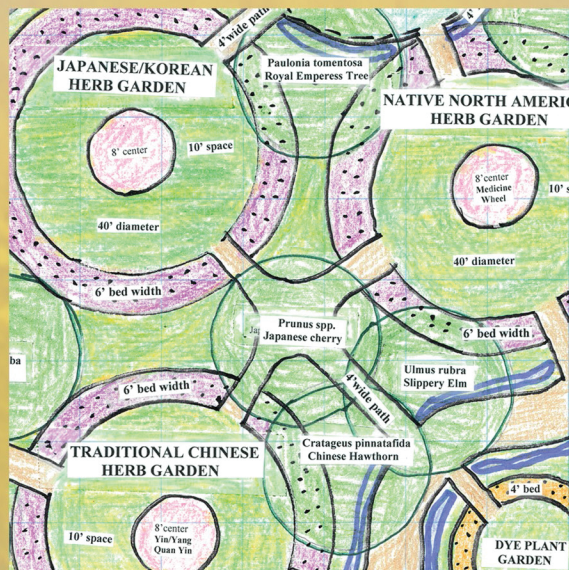
A Community Centered Garden will require:

- A central location that is accessible and inspiring.
- 300'x300' (90,000sqft): space for people, classes, meditation and ceremonies, greenhouses, production & sales.
- Fences, water, power, sewage, and ADA access.
- Space for soils, composting, & potting, a parking area & delivery access.
- An on-site caretaker/garden manager with minimal residence facility, (ie, a 30' yurt).

PEACEFUL SPACIOUSNESS

Garden Will Include:

- 15 traditional gardens, 7 specific use gardens,
- A Sacred Central garden,
- An herbal boutique and herbal tea patio,
- A nursery, propagation and research facilities,
- 55 medicinal trees, encircled by 27 world conifers,
- Bio-swails and catchment, passive solar and panels.



See website for greater detail.

Garden Will Provide:

- Educational opportunities,
- Seminar and workshop spaces,
- Herbal processing facilities,
- Outdoor lecture and event space,
- Herbal products, tonifying teas,
- Peace and quiet, sacred space,
- Research facilities, employment,
- Opportunity to experience plant energies,
- Cultivation of compassionate energy consciousness,
- Empowerment of ethnic diversity,
- Unification of the community in the garden,
- A center of grounding compassion,
- Reclamation of our community economy,
- Inspiration and support for herbal practice,
- Perpetuation of rare and endangered herb varieties,
- Herb plants for additional gardens,

GRATITUDE AND JOY

PROPOSAL

- Bring together interested parties from local and East Bay ethnic communities, herbal studies and gardening programs and others, to discern how we can create this medicinal herb garden.
- Explore our abilities to jointly sponsor, fund, and create this garden facility that we need.
- Jointly support the management of this garden through Nonprofit status, a committed directorship, and assisting internships from herbal studies programs and ethnic communities.



Echinacea angustifolia: medicinal coneflower

- Create a board of oversight comprised of leaders herbal studies and gardening programs, and others of relevant expertise.
- Design financial remuneration to be derived organically from herb plant and plant product sales, lease of plant propagation and research facilities, sale of solar power, and from public educational programs. This remuneration ideally would cover the costs of maintenance and management of the garden facility.
- Transformation of Healing Spirit Plants (medicinal herb nursery) from a business into a contribution to the establishment and management of this medicinal plants garden.
- Offer my experience and service to the creation and management of this medicinal plants garden,

FACILITATE A COMMUNITY CENTERED PEACE